

# NASHOBA LEARNING GROUP

PROVIDING HELP FOR INDIVIDUALS WITH AUTISM, AND HOPE FOR THEIR FAMILIES.

## NEWSLETTER



### INSIDE THIS ISSUE

<i>NLG Spring Fling</i>	2
<i>Talent Show</i>	2
<i>Bike and Walk a thon</i>	3
<i>NLG Adult Program Capital Campaign</i>	3
<i>Thank you!</i>	4

### Coming Events

**Bikeathon/walkathon, July 21, 2012—Concord, MA**

**Capital Campaign Event, September 27, 2012—Boston Harbor Hotel**

**Give them Wings Auction, November 3, 2012—Doubletree Hotel, Bedford**

For more information on events and ways to help, contact Kathy Romeo, [kathy.romeo@nashobalearninggroup.org](mailto:kathy.romeo@nashobalearninggroup.org)

*June 2012 Issue*



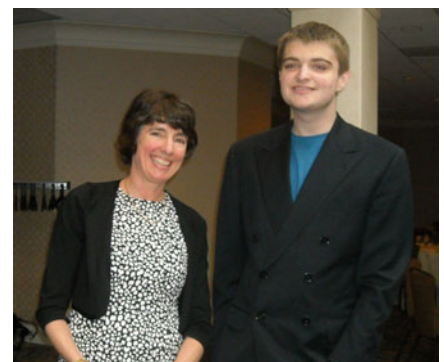
Like all schools, Nashoba Learning Group's spring is packed with celebrations of learning and community. Our Open House on March 31<sup>st</sup> showcased the accomplishments of our students with an expanded Talent Show and beautiful displays of art. NLG staff members presented our new Life Skills Assessment Tool and student learning outcomes at a workshop at the ABAI Convention in Seattle. In addition, many professionals and families accessed our knowledge through our recently launched website and continuing education offerings. And, the NLG prom was a wonderful evening of camaraderie and celebration for our teenage students and their families.

Unlike most schools, NLG doesn't stop for the summer. After a short break, our students will continue the challenging but reinforcing work of learning and the celebration of each individual achievement all summer long. Our dedicated and talented staff members also work all summer long continuing to teach and motivate our students to reach new heights. We are looking forward to a wonderful summer of learning at NLG.

We are also looking forward to some important events. On **July 21<sup>st</sup>**, our community comes together for our 11<sup>th</sup> annual **Bike and Walk a thon**. We will also be hard at work this summer planning a **September 27<sup>th</sup> Capital Campaign Event** to support our soon to open **Adult Program**. Look for more information on these events inside and on our website. Please join us in these important efforts. Together we are making a life-long difference for individuals with autism. They can't do it without our help and we can't do it without you.

Thank you for all you do to enable NLG to bring out the best in all our students with autism!

Liz Martineau  
President





## NLG SPRING FLING

On May 5th NLG hosted a Spring Fling for our older students at the Doubletree hotel in Bedford. It was a great evening of dinner and dancing. Our students enjoyed the opportunity to dress up and have a wonderful evening with their peers. Parents and teachers joined in the fun and basked in the evident joy of the students.



## NLG OPEN HOUSE/TALENT SHOW

On March 31st NLG opened our doors to parents and friends for an Open House and 3rd Annual Talent Show. The students and teachers worked very hard to prepare and rehearse for the big day. We had 14 acts with over 40 students participating in the show. The show was a great success and we couldn't be prouder of all of our performers!





## GET READY FOR THE 11<sup>TH</sup> ANNUAL BIKE AND WALK A THON ON JULY 21ST!

For 11 years, since our first Bike a thon helped us raise the funds to start NLG, our Bike and Walk a thon has been an important fundraising event and a wonderful opportunity for NLG families, students, and friends to gather for a day of fun. The bike ride will begin promptly at 8:30am with registration beginning at 7:30. We have both 50 mile and 25 mile options. The ride is marked and supported and very scenic. The walk begins any-time between noon and 2 pm and is a 2 mile round trip on a marked trail in the woods to Walden Pond and back, a perfect distance for children with a pool awaiting them on their return. All events begin and end at 675 Sudbury Road in Concord. Registration and sponsorship information is available on our website:



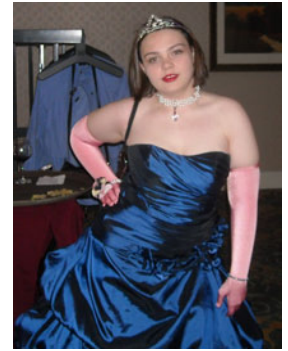
[www.nashobalearninggroup.org](http://www.nashobalearninggroup.org) or call us at 781-275-2500. We ask all participants to gather sponsors to raise funds to support NLG Group in our mission to enable those with autism to develop to their full potential. We look forward to seeing you there!

## NLG ADULT PROGRAM CAPITAL CAMPAIGN EVENT

NLG has been hard at work developing an Adult Program to serve our graduates, and others like them, with employment support, community activities, continued life and job skills training, and recreation. We are very excited about this program and the opportunity to fill a gap in available adult options for those who have built excellent skills, but require continued support to be successful. The program will launch in 2013 and we have begun a Capital Campaign in order to raise



start-up funding and funds to lease and renovate space. We are pleased to report that we are already close to halfway to our goal of \$4 million. We are planning an event on September 27<sup>th</sup> at the Boston Harbor Hotel to launch the next phase of the Campaign. We will be working all summer to obtain sponsorships for areas of the Program and our efforts will culminate in this event. To learn more about sponsorship opportunities, please contact us at 781-275-2500. Together we can create a new and important model for programming that allows adults with autism to be successful members of the community throughout their lives.



### Box Tops for Education

NLG is collecting Box Tops for Education. You can find these on participating products. For every box top we receive NLG will get 10 cents for the school. For a list of products or for more information please visit [Boxtops4education.com](http://Boxtops4education.com)



Your Shopping can benefit NLG: Register at [www.onecause.com](http://www.onecause.com) and choose NLG as your school to support. Shop at One-cause.com and NLG will earn a percentage of what you spend at places like Amazon.com and more.

Nashoba Learning Group, Inc.  
10 Oak Park Drive  
Bedford MA 01730

Phone: 781-275-2500  
info@nashobalearninggroup.org  
www.nashobalearninggroup.org

NONPROFIT ORG  
U.S. Postage  
PAID  
Bedford, MA  
Permit NO. 9

---

**THANK YOU TO OUR GENEROUS DONORS!**

Clare Hamill

Tom & Barbara  
Moloney

Brendan & Mary Cheever  
Charles and Gloria Clough  
Glenn & Mary Jane Creamer  
Genworth Foundation  
Nirmal & Shashi Jain  
John Pyne

Peter & Kathleen Cullen  
Linda Foley  
L. Clarke & Katy Miller  
Stephen & Martha Matloff  
Staley Capital Management  
Peter & Melissa Zorn



Gerard Vaio &  
Stephanie Davidoff  
Judith & Andrew  
Ursitti

Adi & Amit Alon  
Douglas Atamian  
Brad & Barbara Baker  
Jayati Basak  
Nan Leonard & Cesar Brea  
Robert & Marilee Havel-Brew  
Robert & Debra Campbell  
Barbara Quinones & Frank  
DiCataldo  
Sanjeev & Poonam Gupta  
L.J. & Karla Harrington  
Stephen & Jernagan Kezirian  
Marketing Associates Insurance  
Agency  
Liz Martineau & John McClellan  
Monroe Town & Country Veterinary  
Hospital  
Tina Sylvester  
Maureen & Steve Vibert  
Judith Walsh