

NASHOBA LEARNING GROUP

PROVIDING HELP FOR CHILDREN WITH AUTISM, AND HOPE FOR THEIR FAMILIES.

NEWSLETTER



INSIDE THIS ISSUE

<i>NLG Student Jobs</i>	2
<i>NLG Timeline</i>	2
<i>NLG Hoops</i>	3
<i>NLG Participates in AFAA Town Hall</i>	3
<i>Grants and Gifts</i>	3
<i>NLG Mission</i>	3
<i>Thank you</i>	4

Coming Events

NLG's Annual Appeal has been mailed! Thank you for contributing! Email ann.rosas@nashobalearninggroup.org for more info.

• • •

NLG Fundraiser at Pizzeria Uno in Burlington will be on Jan 21, 2010. Come eat at Uno's to benefit NLG.

• • •

Full Court Charity Basketball Challenge benefitting NLG & LADDERS will be on March 13th at Basketball City in Boston. Thank you to the Forlenza family for organizing this fundraiser!

• • •

Put Saturday April 10, 2010 on your calendars for the dedication of our Expansion space and playground.

December Issue
2009

LETTER FROM LIZ

As 2009 draws to a close, all of us at NLG look back at the year just completed with gratitude and ahead to the future with hope. 2009 was a tremendous year of growth for NLG and our students, thanks to the generosity of our donors and the talent, skill and dedication of our entire staff. It is a joy to see our students achieve so much and take pride in their accomplishments. It has also been a joy to welcome 15 new students of all ages this year and help them become successful, motivated students. All our classrooms are thriving, including our pre-school, which now includes 10 students ages 3 to 6+ in 3 classrooms, our 38 elementary school aged students and our 27 teenage students.

In 2009, the first NLG students turned 18 (with 5 achieving that milestone). As our oldest students become young adults, we have continued to work hard to create the state of the art programming they need as they approach adulthood. In 2009, we created an innovative Practical Money Management curriculum and have begun to create a Community and Daily Living Skills curriculum for our young adults. Our

students continue to excel in our Vocational program and this fall we successfully placed our first students in part time jobs in the community. We are very pleased with our students' progress and we look forward to continuing this program development in 2010. The first part of 2010 will also bring the renovation of our last 5,000 square feet, which will allow us to welcome 15 additional students. Thank you so much for your support in these efforts— our students with autism will reap lifelong benefits from your generosity. We wish you a wonderful and successful 2010. - **Liz Martineau President**



NLG'S EXPANSION SPACE

NLG is pleased to announce that we will begin construction of our remaining 5,000 square feet in January! We have been working with David Materos, the architect who helped us make our current space a winning one for our students and staff, to design the space.

Our goal is to continue with the

elements that make our current space so successful but with additional flexibility built in so that the use of the space can evolve with our needs. We are pleased to be working with **Gutierrez Construction Company** as our general contractor. Put April 10th on your calendar for a celebration of the new space.

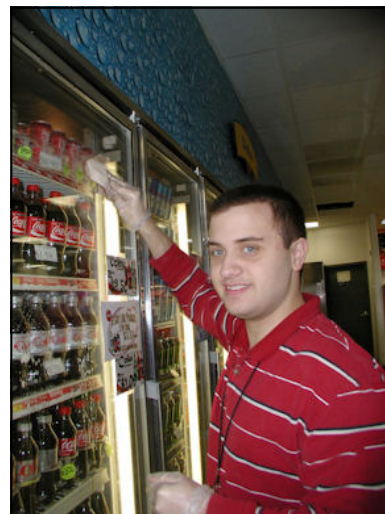
NLG STUDENT EMPLOYMENT

NLG Vocational students are working in the community! NLG is pleased to announce that we now have 4 students working as either paid employees or volunteers with outside employers. Thank you so much to **Verc Enterprises** in Westford, **Fitness Together** in Burlington and **Westford Town Convenience** for welcoming our students and allowing them to generalize their skills to real jobs. NLG also thanks **Minuteman ARC** for partnering with us for the Verc Enterprises position. NLG students have learned to perform high quality work in simulated settings in the NLG Vocational Program. Working at an outside site, with their NLG teacher accompanying them, allows our students to generalize their skills to real life work conditions. It also allows NLG staff to identify additional training needs and to work on gradually fading supervision.

These are valuable opportunities for our students and we are very delighted to have them. In addition, several of our students are working at real jobs, under real life conditions within NLG. NLG students are manufacturing learning materials for fellow students, working at our school store, completing office work and assisting the Vocational staff. We are looking forward to continuing the development of employment opportunities as a critical step towards allowing our students to be productive members of the workforce as adults. Please join us in thanking our employer partners. We are also continuing to look for additional opportunities as our student population expands. **If your company might have opportunities for our students, please contact Stephanie Daniels at steph.daniels@nashobalearninggroup.org.**

COMEDY SHOW IS A HIT!

Many thanks to Paul Halloran for putting together a very successful comedy show on October 15th in Stoneham. 170 attended the show, which included a dozen comedians, featured Don Gavin, Lenny Clarke, and Steve Sweeney and was hilariously funny. Thank you to the comedians, all of whom donated their time to benefit Nashoba Learning Group and Autism Speaks! A good time was had by all, including many NLG staff members, as everyone enjoyed an evening of fun. And a special thank you to Amy Thoren, who acted as “Vanna” for the live auction.



Nick at work in Westford.

NLG EVENT TIMELINE

2009					2010						
December	January	February	March	April	May	June	July	August	September	October	November
Annual Appeal	Fundraiser at Pizzeria Uno Burlington Jan 21		Full Court Charity Basketball Challenge benefiting NLG and LADDERS March 13	Celebration of NLG's New Space & playground April 10		Bike-a-Thon & Walk-a-thon June 26			Give them Wings Dinner and Auction		

NLG HOOPS

For the second year, Lexington High School students volunteered their time to teach basketball skills to our students. Great fun was had by all! Thanks go out to organizer Allie Forlenza, and all the volunteer coaches: Chris O'Keefe, Chris Lee, Pat Burns, Lyle Morrison, Nandi Mehta, Cat Costello, and Jeremy Moss.



NLG PARTICIPATES IN AFAA TOWN HALL

NLG was a co-sponsor for the Boston area site of the Advancing Futures for Adults with Autism virtual National Town Hall meeting designed by **Autism Speaks**. Along with fellow Boston site sponsors: NECC, Melmark New England, The Doug Flutie Foundation and the Megargel Family, NLG participated in this meeting designed to establish national level priorities for ensuring that adults with autism have access to the support they need. Given the coming surge in adults with autism, the initiative is a step towards creating a public policy agenda.

GRANTS AND GIFTS

- Thank you to the **Yawkey Foundation** for their recent grant of \$25,000 for capacity building! We are deeply grateful for the ongoing support of the Yawkey Foundation. Yawkey has done so much to enable NLG's growth! We appreciate the grant even more given the difficulty all endowed foundations experienced as the stock market sank. We salute the Yawkey Foundation for continuing their vital support to the community and to NLG.
- Thank you to the **Middle Neighborhood** for their generous donation of a Wii with all the trimmings and a variety of games that are highly reinforcing for our students! Thank you everyone!



Liz Martineau accepts the middle neighborhood gift from Linda Foley and son Nolan Orpin, Erin Dunham and son Tim Dunham.

NLG'S MISSION

Rates of autism are now reported as 1 in 150 children by the Center for Disease Control. Children with autism require intensive educational intervention in order to develop to their potential. Nashoba Learning Group was formed as a non-profit corporation in 2002, opening in 2003, in order to provide more impaired children and adults with autism with the services they need to succeed. We provide outstanding individualized education, training, and intervention to children and young adults with autism, allowing those we serve to achieve their full potential and participate as fully as possible in family and community activities throughout their lives. We can't do this without your support!

Support NLG

Your shopping can benefit NLG:

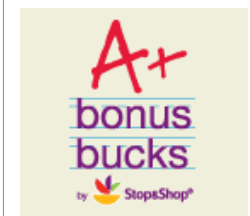


Register at www.onecause.com and choose NLG as your cause to support. Start your shopping at one-cause.com and NLG will earn a percentage of what you spend.



Target Take Charge of Education

If you have a Target credit card, go to www.target.com and designate NLG to receive 1% of your credit purchases.



Your purchases can support NLG if you go to <http://www.stopandshop.com/aplus> and designate NLG to benefit with your Stop & Shop card.

Nashoba Learning Group, Inc.
10 Oak Park Drive
Bedford MA 01730

Phone: 781-275-2500
info@nashobalearninggroup.org
www.nashobalearninggroup.org

NONPROFIT ORG
U.S. Postage
PAID
Bedford, MA
Permit NO. 9

THANK YOU TO OUR GENEROUS DONORS!

The Yawkey Foundation

Nan Leonard & Cesar Brea
Mary Burke

David & Erin Dunham
Alan & Jeanine Freimont
Judith & Andrew Ursitti

Gerard & Angela Andreottola
Kevin & Catherine Boyle
Deanna & Tony Cavallo
Robert & Sandra Comire
Michael & Rebecca Corda
Hillary DeMello

David & Wendy Greenhalgh
Richard & Jeanne Greenhalgh
Ned & Wendy Gulley



Thank you to all who
supported NLG this year,
we can't do it without
you!

Alex & Joyce Johns
James & Kathleen Mumma
Dan & Laura O'Donnell
Jonathan & Susan Parziale
Nelson & Ann Rosas
Ivan Shen & Jackie Yu
Zoel & Lydia Sylvester
Chris Pyne and Holly Swan
Bruce & Donna Vienneau

Team Dahlin's Adirondack
Canoe Race

Susan Parziale's Birthday
Wish

Paul & Julie Halloran and
Comedy Night guests