

NASHOBA LEARNING GROUP

PROVIDING HELP FOR CHILDREN WITH AUTISM, AND HOPE FOR THEIR FAMILIES.

NEWSLETTER



INSIDE THIS ISSUE

<i>Letter from Liz</i>	1
<i>Bike-a-thon</i>	1
<i>NLG Prom</i>	2
<i>NLG Mission</i>	3
<i>Recent Grants and Visitors</i>	3
<i>How you Can Help</i>	3
<i>Sponsors</i>	4

Coming Events

We hope to see you at The **"Give them Wings"** dinner and auction on **September 20, 2008**, at Bentley College Conference Center in Waltham. Tickets are \$100 per person.

Contact Jenny Kane at Jenny.Kane@NashobaLearning-Group.org or call NLG at 781-275-2500 to participate in this wonderful evening.

The **NLG School Store** is now open! Come visit. See details next issue.

September Issue
2008

LETTER FROM THE PRESIDENT

Summer has been a great season at NLG. Without a doubt, the highlight was our 1st Prom. Our students had a wonderful time! It was immensely gratifying for NLG staff and families to see our teenagers really enjoying a social occasion in the company of their classmates and those that love them. It was a milestone many families never dared hope their child would reach. Many thanks to Debra Campbell for organizing the whole thing, to all the NLG staff, parents and friends who helped make the night so special, and to all who contribute to the mission of Nashoba Learning Group.

Liz Martineau, President



See inside for many more Prom pictures!

BIKE/WALK-A-THON AUGUST 2ND!

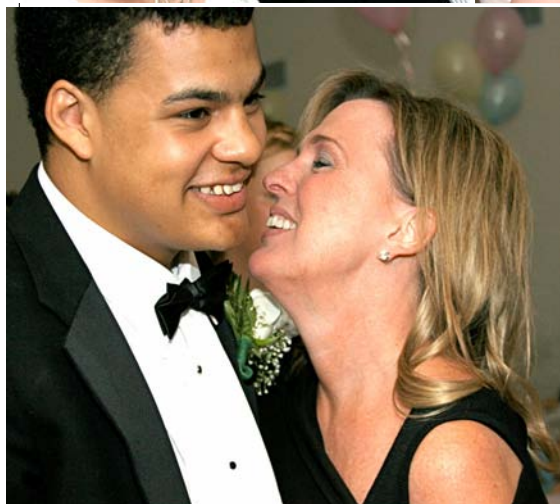


The 7th Annual NLG Ken Oliver Memorial Bike/Walk a thon was both a successful fundraiser and a great community building event for NLG. A record 21 riders braved the 50 mile ride with 10 first time riders joining returning riders. Many thanks to our riders and to all of their sponsors. Then, 40 NLG families, staff and friends, including 10 NLG students, walked 2 or 4 miles to Walden Pond or did a "swim a thon" in the pool. **The Colonial Inn of Concord** donated box lunches that were enjoyed by all participants. Thank you to all who assisted with and participated in this event!

Special thanks to Jenny Kane and the Boyle, Cullen, Freimont, Vibert, and Brea families for providing support for the riders and walkers. Start training now for next year's event to be held on June 20, 2009.



NLG PROM PICTURES!



NLG'S MISSION

The Center for Disease Control now reports the rate of autism as 1 in 150 children. Children with autism require intensive educational intervention in order to develop to their potential. Nashoba Learning Group was formed as a non-profit corporation in 2002 to provide more impaired children and adults with Autism with the services they need to succeed. NLG opened to students in

2003. We provide outstanding individualized education, training, and intervention to children and young adults with autism, allowing those we serve to achieve their full potential and participate as fully as possible in family and community activities throughout their lives. We can't do this without your support! Thanks for all you do to help us achieve our mission!

AUTISM SPEAKS

On August 7th, NLG had the honor of hosting Mark Roithmayr, President of **Autism Speaks**, and Vince Goglia and Erica Guinta of the New England Region. Autism Speaks recently awarded NLG a Community Service Grant. This grant will provide the funds needed to train new staff members as we expand our student body. In just 3 years, Autism Speaks has succeeded in raising awareness of autism and funding research into the causes of this disorder. Now Autism Speaks is also working to assist those diagnosed with autism. NLG is proud to have been selected as a grant recipient and we look forward to working in partnership with Autism Speaks.

VISITORS FROM JAPAN

On August 12th, 30 special education professionals from Japan spent a day at NLG learning about our program. The group was led by Keiichi Takeda, M.D. LD Center Advisor Osaka Medical College. NLG was pleased to share information with this group for the benefit of those with autism.



Thank you to our
Bike a thon Riders!

David Ackerman
Patrick Autissier
Mark Bernard
Cesar Brea
Ned Bowman
Pat Canavan
Eric Duisberg
Linda Foley
Dana Gray
Leonard Lilly
Rich Mahoney
Liz Martineau
Jane McClellan
John McClellan
Rick Murray
John O'Connor
Katherine O'Connor
Bill O'Mara
Dan Sullivan
Lori Steers
Ron Steers

HOW YOU CAN HELP

Participate in the **Give Them Wings Auction on September 20th at Bentley College Conference Center**: Come to the event and bid on items in our fabulous silent and live auction. Volunteer to serve on the set-up or clean-up committee. Contact Jenny Kane at Jenny.Kane@nashobalearninggroup.org

"Wish List" Visit our website to see our wish list of items needed, from markers to tables and everything in between. Visit our site- click on the link provided and these items can be purchased and sent directly to the school. There is also a link allowing monetary donations.

Matching Gifts: An easy way to increase the value of your donation is through a matching gift. Speak with your employer. You can literally double the amount of your donation to NLG!

Be an Employer Partner: Help us prepare our students for adult employment and gain access to valuable services for your business.

lgive.com: Log on to this site and shop at over 650 stores. A percentage of your purchase goes directly to NLG.

Nashoba Learning Group, Inc.
10 Oak Park Drive
Bedford, MA 01730

Phone: 781-275-2500
info@nashobalearninggroup.org
www.nashobalearninggroup.org

NONPROFIT ORG
U.S. Postage
PAID
Bedford, MA
Permit NO. 9

THANK YOU TO OUR DONORS!

AUTISM SPEAKS



Carmen Scarpa
Boston Scientific Corporation
Shaw's Supermarkets, Inc.
Doubletree Hotel, Bedford
Lucinda & Richard Hamilton
Michael & Trisha Shortell

Marie Martineau
Glenn August
Bedford Rotary Foundation
Eduardo & Tracy Brea
Marilee & Robert Brew
The Melvin Family Foundation
Ian & Anne Sanderson
The Colonial Inn, Concord
Tim & Linda Cox
Francine Pillemer

