

# NASHOBA LEARNING GROUP

PROVIDING HELP FOR CHILDREN WITH AUTISM, AND HOPE FOR THEIR FAMILIES.

## NEWSLETTER



### INSIDE THIS ISSUE

<i>Letter from Liz</i>	1
<i>Bike-a-thon</i>	1
<i>May 8th Event</i>	1, 2
<i>ABA Presentation</i>	2
<i>NLG Mission</i>	3
<i>Recent Gifts</i>	3
<i>How you Can Help</i>	3
<i>Sponsors</i>	4

### Coming Events

NLG is hosting a prom for our teenage students on June 21st. Thanks to Debra Campbell for organizing this event.

The Bike a Thon and Walk a Thon are coming on August 2nd. See column to the right for more info or contact Jenny Kane at [Jenny.Kane@NashobaLearningGroup.org](mailto:Jenny.Kane@NashobaLearningGroup.org)

The "Give them Wings" dinner and auction will be on September 20, 2008. at Bentley College Conference Center in Waltham. Contact Jenny Kane at [Jenny.Kane@NashobaLearningGroup.org](mailto:Jenny.Kane@NashobaLearningGroup.org)

June Issue  
2008

## LETTER FROM THE PRESIDENT

It has been a busy spring at NLG. We have been getting all our terrific new facilities up and running for the benefit of our students, and integrating new staff and new students. Many of our students have had their annual "IEP" meetings over the last few months. These meetings provide an opportunity to celebrate each student's wonderful accomplishments over the past year and to set ambitious new goals for the coming year. It is a time to reflect on what a tremendous impact our staff and our program have on the lives of our students. Thank you for all you do to make that possible!

*Liz Martineau, President*



### BIKE/WALK-A-THON AUGUST 2ND!

Start your training now for the 7th Annual NLG Ken Oliver Memorial Bike/Walk a thon. Bike 50 miles or walk 2 or 4 miles in scenic Concord MA. The ride begins at 8:30 am and the walk at noon. Many NLG students participate in the walk each year! See our website: [nashobalearninggroup.org](http://nashobalearninggroup.org) for entry and sponsorship forms. This event is a terrific way to reach out to friends and neighbors for sponsorship support and to enjoy the outdoors with the NLG community.

### MAY 8TH TRIBUTE TO HEROES A BIG SUCCESS

Thank you to all who were part of NLG's Tribute to Heroes. This event, featuring American Hero and former U.S. Navy SEAL Marcus Luttrell, was a wonderful success, raising funds to complete our expansion and inspiring all of us to never sur-



render in our efforts on behalf of those with autism. Marcus also paid tribute to the heroism of our staff. Special thanks to Karen & Bob Forlenza for chairing the committee and to our committee members; Dan Roche of WBZ Sports for serving as our Auctioneer; all who attended; and our Event Sponsors, listed on pages 2 and 4.



## TRIBUTE TO HEROES EVENT

Our May 8th event raised over \$300,000 for NLG! Thank you to all who helped with the event including: Jenny Kane, Cindy O'Connor, Brian Abruzzi and Cynthia Reed. In addition to Event Sponsors, listed on page 4, NLG is grateful to all ticket, Giving Tree and Playground donors. **THANK YOU!**

### Donors:

Andrew & Judith Ursitti

Bill Moness

John & Joanna Jacobson

Jim & Gina McCaffrey

Peter & Kathleen Cullen

Peter & Kay Bernon

Gary & Vicki Rinaldi

Joe & Jen Falcone

Martin & Kathleen Pasqualini

John & Bridget Casey

Mark & Mina Tauro

Chris & Shirley Kelly

Cesar Brea & Nan Leonard

Thomas & Caroline Lucey

Shawmut Design & Construction

Whit & Molly Johnson

Thomas & Barbara Moloney

Marie Martineau

John Collins & Cynthia Reed

Dennis & Ann Leddy

Nirav & Juhi Dagli

Mike & Lee Bell

Point Judith Management Company LLC

Mark Fuller & Joe Froman

Sean Marsh

Vincent & Ellen Forlenza

Anthony Tomasiello, Jr. & Janet Amorello

Citizens Financial Group

John & Susan Pittenger

Michael Cleary

Robert & Jean Hausmann

## BOSTON MARATHON

Thank you to the 2008 Boston Marathon Donors

Charles & Gloria Clough

Bob & Karen Forlenza

George & Connie Noble

Jonathan & Patti Kraft

Rob & Elizabeth Kirkpatrick

Linda Marra, Greater NY Marine Transportation

Peter Vigue, Cianbro Charitable Foundation

H. Louis Bailey

Eric & Laurie Slifka

Colin & Sarah Campbell

John D'Elia

Thomas Smart, Craftech

William & Melanie Smart

Jean Delangis, Kildair Service LTD

Sean & Liz Goguen

Robert & Kathleen Kleiber

Bruce & Donna Vienneau



## NLG PRESENTS SYMPOSIUM AT INTERNATIONAL ABA CONFERENCE

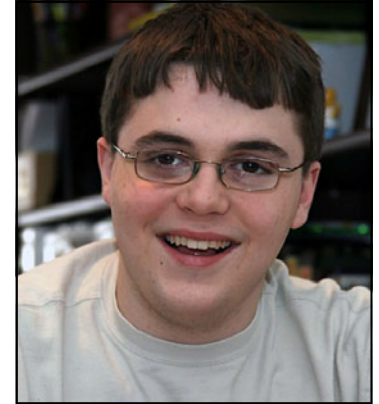
NLG presented a Symposium at the 34th Annual International Applied Behavior Analysis Conference in Chicago on May 26th titled: **Teaching Higher Level Skills Using Visual Prompts That Are First Manipulated, Then Used As Reference And Then Faded.** The 3 presentations highlighted innovative teaching procedures NLG has developed and used successfully with our students in the following areas: **Math Skills, Prepositions, and Answering "Wh" Questions.** Liz Martineau, BCBA, Presi-

dent and Clinical Director served as Symposium Chair. The presenters were: Liz Martineau; Jessica Slaton, BCBA, Clinical Director; and Tara Montoure, Clinical Manager. Many NLG staff participated in completing the research for the presentations. Karen Potts BCBA, Clinical Director, completed additional research for the Prepositions presentation that will allow us to present this study for journal publication. Also assisting in the research were Crystal Seagle and Alison Smith.

## NLG'S MISSION

The Center for Disease Control now reports the rate of autism as 1 in 150 children. Children with autism require intensive educational intervention in order to develop to their potential. Nashoba Learning Group was formed as a non-profit corporation in 2002 to provide more impaired children and adults with Autism with the services they need to succeed, and opened to students in

2003. We provide outstanding, individualized education, training, and intervention to children and young adults with autism, allowing those we serve to achieve their full potential and participate as fully as possible in family and community activities throughout their lives. We can't do this without your support! Thanks for all you do to help us achieve our mission!



## RECENT IN KIND DONATIONS AND GRANTS

Thank you to the **Community Crossroads Foundation/Nashoba Brooks School** for a recent generous grant towards our Nurse's Clinic.

NLG is grateful to **Double Tree Hotel of Bedford** for the recent donation of hotel room furniture to our Vocational Program. This gift will allow our students to learn essential skills.

NLG recently received over a truckload of office furniture donated by **Boston Scientific Corporation**. This furniture will allow us to equip classrooms for new and existing students. We are grateful! Thank you Sean Baptiste, Casey Malone, and John Veneron of **Harmonix** in Cambridge, MA for donation of the



Rock Band Game and Chris Rumpf for donation of a PlayStation 2. The gift is being thoroughly enjoyed!

*Congratulations to the NLG Marathon team for their fine finishes in the 2008 Boston Marathon!*

*Mandy Birt  
Mike Ellowitz  
John McClellan  
Jeff Taylor  
Judith Ursitti*

*Thanks for raising funds and awareness for NLG!*

## HOW YOU CAN HELP

**Ride or Walk at our August 2nd event or be a sponsor.** Forms for participants and sponsors are at our website:

Nashobalearninggroup.org. Volunteers are needed, please contact

Jenny.Kane@nashobalearninggroup.org

**Give Them Wings Auction:** Donate silent or live auction items for our September 20th Dinner/Auction. Volunteer to serve on the organizing committee.

**"Wish List"** Visit our website to see our wish list of items needed, from markers to tables and everything in between.

Visit our site- click on the link provided and these items can be purchased and

sent directly to the school. There is also a link allowing monetary donations through the website.

**Matching Gifts:** An easy way to increase the value of your donation is through a matching gift. Speak with your employer. You can literally double the amount of your donation to NLG!

**Be an Employer Partner:** Help us prepare our students for adult employment and gain access to valuable services for your business.

**lgive.com:** Log on to this site and shop at over 650 stores. A percentage of your purchase goes directly to NLG.



Nashoba Learning Group, Inc.  
10 Oak Park Drive  
Bedford MA 01730

Phone: 781-275-2500  
info@nashobalearninggroup.org  
www.nashobalearninggroup.org

NONPROFIT ORG  
U.S. Postage  
PAID  
Bedford, MA  
Permit NO. 9

---

## SPONSORS FOR NLG'S TRIBUTE TO HEROES

### **Presenting Sponsors**

**Bob & Karen Forlenza  
Jim & Kim Pallotta**

### **Playground Sponsor**

**Anonymous in honor of  
Marcus Luttrell's Spartan Platoon**

### **Classroom Sponsors**

**John McClellan & Liz Martineau  
Glenn & Mary Jane Creamer**

### **New Student Sponsors**

**Charles & Gloria Clough  
The Glades Foundation  
Sonia & Paul T. Jones  
Martin & Tristan Mannion  
Sarah & Peter Monaco  
Stuart & Susan Porter  
Michael & Jill Stansky**

### **Group Supporters**

**James Ansara  
John & Lynn Carroll  
Gerald & Kate Chertavian  
Stephen Delano & Maura Doherty  
Tony & Deanna DiNovi  
Richard & Kristine Ganong  
Harry & Nikki Nudelman  
Global Partners L.P. & Eric Slifka  
John & Joanna Jacobson  
Lovett-Woodsum Foundation  
Morgan Stanley  
Robert & Kristan Tishman and John & Maura Dolan  
Bob & Tona White**

